

## Section 71 Parking Requirements

71.1 All parking spaces, loading spaces, manoeuvring aisles and driveways shall be hard surfaced and maintained to the satisfaction of the Development Authority:

- a. Where access to a site is provided by a paved public roadway, the parking area that is required for parking, access/egress and circulation shall also be hard surfaced; and
- b. Access/egress from a paved public roadway to a storage area shall have a paved apron extending from the property line 15m into the subject site for the entire width of the access. Such an access shall be gated to prevent public access.

71.2 A parking lot shall be designed, located and constructed so that it:

- a. Is accessible to and appropriate for types of vehicles using it and the frequency of use; and,
- b. Does not interfere with or potentially impact pedestrian or vehicle traffic on adjacent public roadways.

71.3 Size of Parking Stalls and Drive Aisles:

- a. Unless otherwise allowed by the Development Authority, the minimum dimensions for the design of parking facilities shall be as set out in Table 71-1 - Parking Stall Design Standards;
- b. Parking dimensions for parking angles between 90 degrees and 45 degrees shall be calculated using a straight-line interpolation between dimensions;
- c. Maneuvering aisles and drive aisles serving as fire lanes shall be at least 6.0m wide and shall be clearly posted to the satisfaction of the Grande Prairie Fire Department and maintained by the developer and/or owner;

### **(Bylaw C-1260-79 - February 25, 2019)**

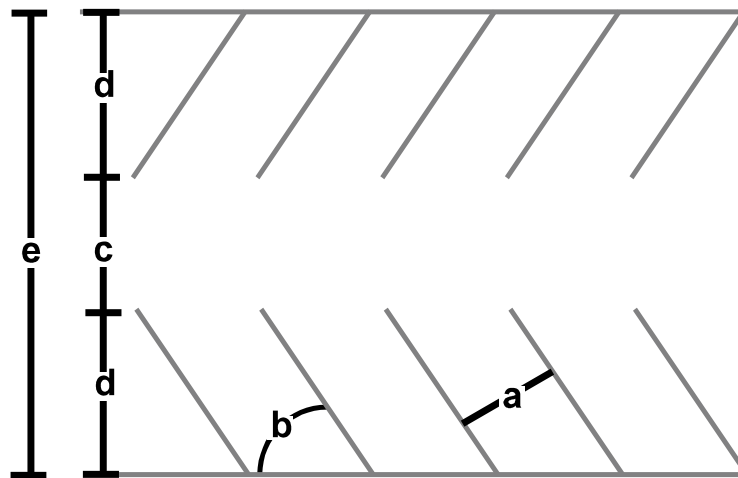
- d. Drive aisle intended for two-way movements by motor vehicles exceeding 7.6m in length shall be at least 9.3m wide;
- e. Driveways intended for two-way movements by other motor vehicles shall be at least 6.7m wide;
- f. Parking stalls shall be clear of all obstructions, other than wheel stops;
- g. The maximum slope of a parking stall shall not exceed 4% in any direction; and,
- h. Drive aisles shall have no more than 25 consecutive stalls (40 for double sided aisles). Aisles shall be broken up by landscaping features or sidewalks at least 5m in length measured in the direction of the aisle.

**Table 71-1 - Parking Stall Design Standards**

Stall Width a	Parking Angle (in Degrees) b	Aisle Width c	Stall Depth Perpendicular to Aisle d	Parking Unit Depth e
7.0m	0°(Parallel)	3.5m (One Way) 7.0m (Two Way)	2.9m	6.4 m (One Way, one-sided) 9.3m (One Way, two-sided) 12.8 m (Two Way)
2.7m 2.9m 3.05m	45°	4.0m 3.8m 3.7m	6.1m	16.0m 15.8m 15.7m
2.7m 2.9m 3.05m	60°	5.5m 5.3m 5.2m	6.4m	18.3m 18.1m 18.0m
2.7m 2.9m 3.05m	90°	7.3m 7.0m 6.7m	5.8m	18.9m 18.6m 18.3m

(Bylaw C-1260-4 - December 9, 2013)

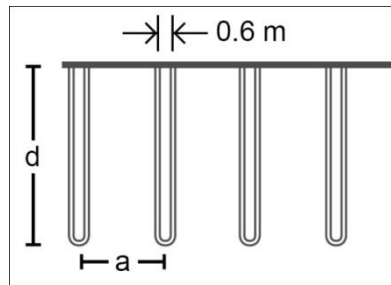
**Figure 71-1 - Illustration of Parking Standard Dimensions (relate to column headings above)**



71.4 The portion or portions of a parking lot used for parking must:

- a. Be marked off or physically divided to delineate clearly each parking stall, loading space or drive aisle; for stalls less than 3.0m wide, the stalls shall be separated by painted double lines 0.6m apart with the space between the double lines included as part of the stall width in Table 71-1; and,
- b. Have suitable barriers to prevent vehicles from encroaching onto landscaped areas and to protect fences, walls or buildings.

Figure 71-2 - Example of painted double lines for stalls less than 3.0m wide



71.5 Wheel stops shall be provided where a sidewalk is at the end of a stall (except parallel stalls) or the stall length can be shortened by 0.75m and the sidewalk can be widened by 0.75m. Where wheel stops are provided, they shall not exceed 100mm in height above the parking stall surface and shall be placed perpendicular to the parking stall depth, 0.6m from the front of the parking stall.