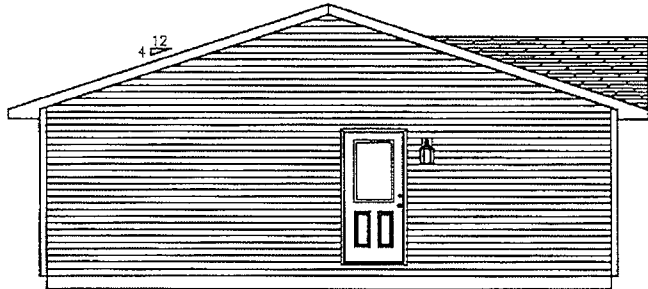
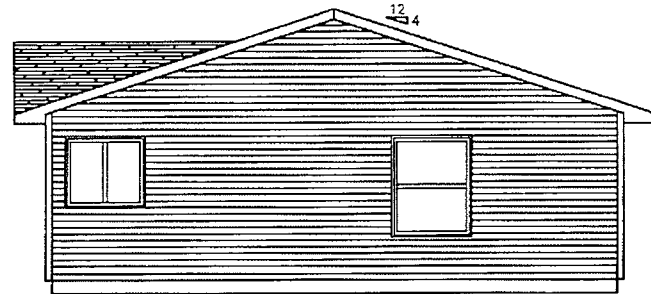


DAPIA SEAL	MODIFICATIONS	MODEL: Q16-0040-2060	SHEET:												
		SYMPHONY													
PROPRIETARY AND CONFIDENTIAL THESE DRAWINGS AND SPECIFICATIONS ARE ORIGINAL PROPRIETARY AND CONFIDENTIAL MATERIALS OF CHAMPION. COPYRIGHT © 1978-2005 BY CHAMPION	<table border="1"> <tr><td> </td><td> </td><td> </td><td> </td></tr> <tr><td> </td><td> </td><td> </td><td> </td></tr> <tr><td> </td><td> </td><td> </td><td> </td></tr> </table>													TITLE: APPROVAL	AP-101
DRAWN BY:	DATE:														
SCALE: 1/8" = 1'-0"															

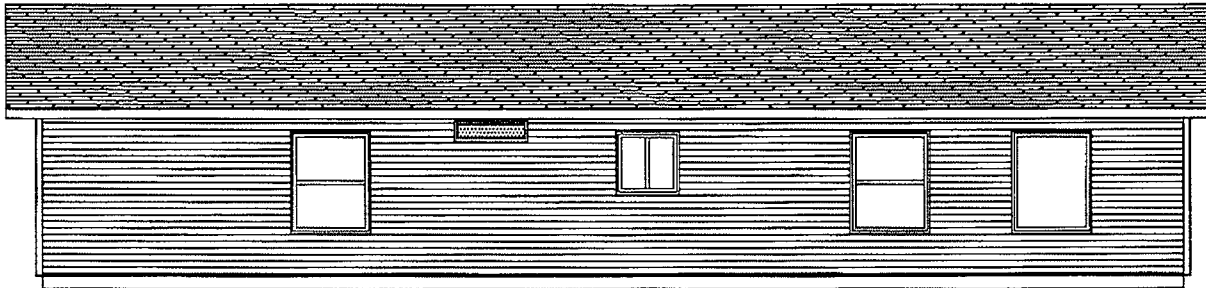
# Q16-0040-2060-EXTERIOR



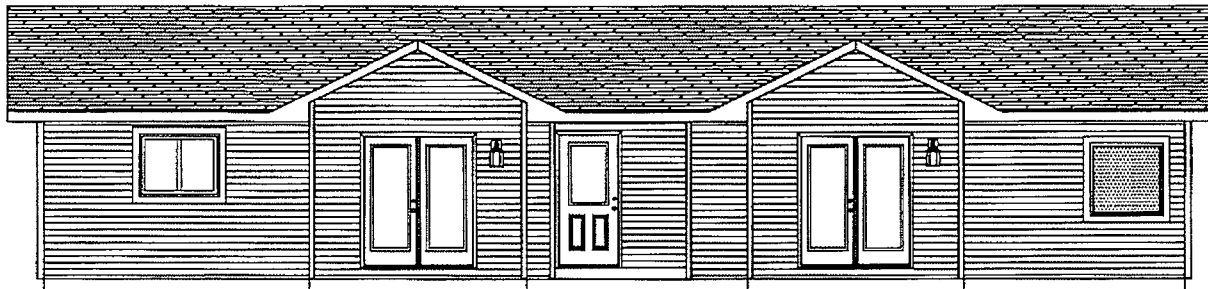
REAR END



HITCH END



ROADSIDE



CURBSIDE

	ADDITIONAL CHANGES	INITIAL	DATE	TITLE	MODEL LINE:
				Q16-0040-2060-ELEV.	SYMPHONY
				DRAWN BY:	SYMPHONY
				DATE:	SYMPHONY