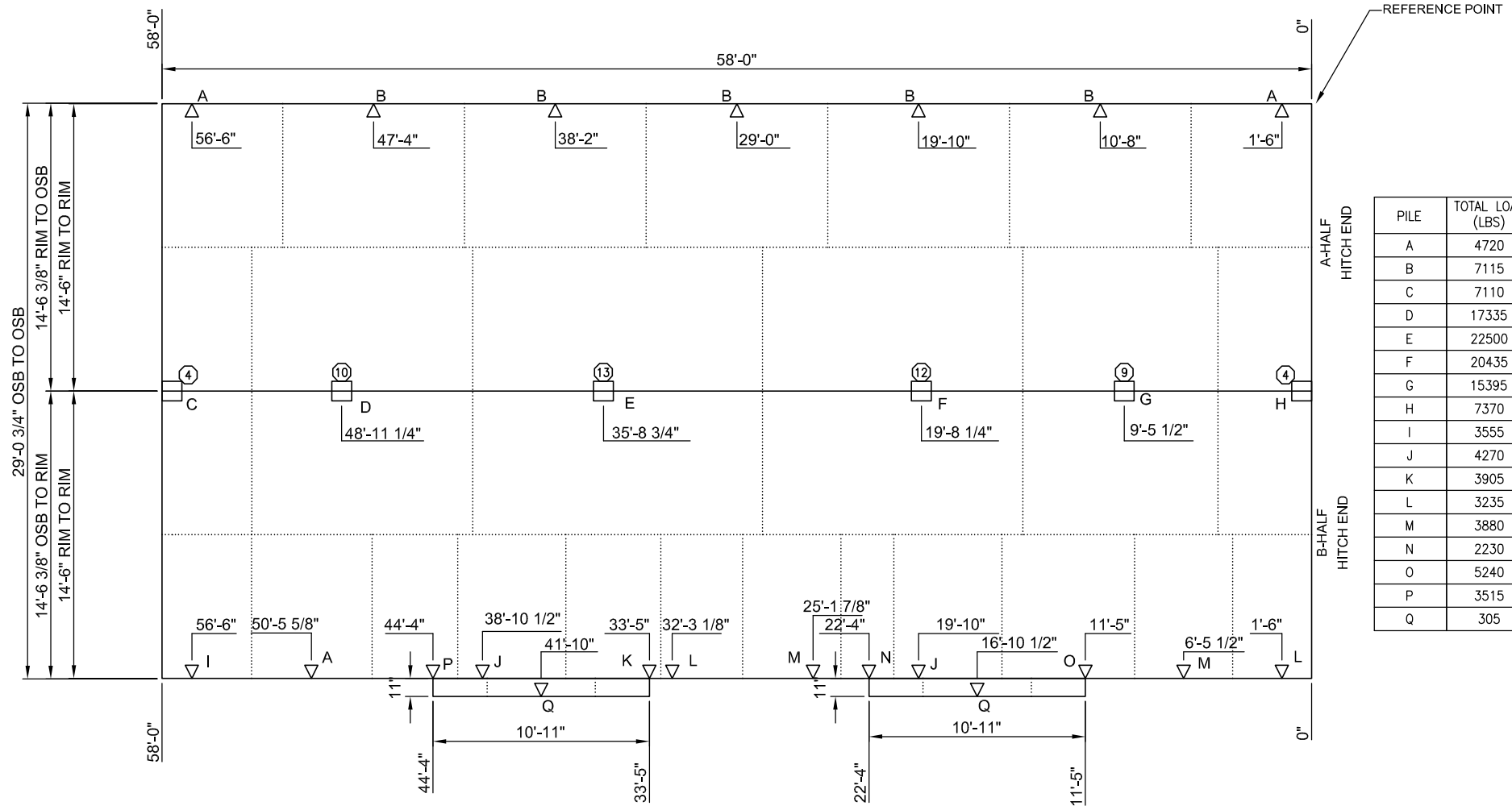


NOTE: NO ALLOWANCES HAVE BEEN MADE FOR ANY SPACES BETWEEN THE MODULES AT THE MARRIAGE LINES



PILE	TOTAL LOAD (LBS)
A	4720
B	7115
C	7110
D	17335
E	22500
F	20435
G	15395
H	7370
I	3555
J	4270
K	3905
L	3235
M	3880
N	2230
O	5240
P	3515
Q	305

NOTE: ALL LOADS IN POUNDS

UNFACTORED DESIGN LOADS	
ROOF LIVE LOAD	=42 psf
ROOF DEAD LOAD	=10 psf
FLOOR LIVE LOAD	=40 psf
FLOOR DEAD LOAD	=15 psf

	FROM HITCH END	FROM REAR SIDEWALL
DRAIN #1	22'-1"	3'-9"
DRAIN #2	10'-5"	22'-8"
DRAIN #3	52'-0"	28'-3"
WATER	34'-0"	5'-8"
ELECT	33'-7"	1'-5"

□ SUPPORTED AREA

○ STEEL FRAME PIER
REFER TO CSA STANDARD Z 240.10.1 FOOTING INFORMATION
△ PERIMETER PIER
REFER TO FIELD INSTALLATION MANUAL TABLE C, PAGE 2.9 FOR FOOTING INFORMATION

THIS DRAWING IS INTENDED TO SHOW THE PERIMETER OUTLINE AND OVERALL DIMENSIONS AND STEEL FRAME SUPPORT LOCATIONS FOR THE APPLICABLE HOME. THIS DRAWING AND RELATED DRAWINGS ARE BASED ON THE REQUIREMENT OF CSA STANDARD Z 240.10.1 AND THE MODULINE FIELD INSTALLATION MANUAL AND ARE GIVEN AS A GUIDE ONLY FOR THE DESIGN AND CONSTRUCTION OF THE SUPPORTING STRUCTURE. THE PURCHASER IS CAUTIONED TO SEEK PROFESSIONAL ADVICE FOR THE SUPPORTING STRUCTURE DESIGN AND CONSTRUCTION. DUE TO CONSTRUCTION TOLERANCES DIMENSIONS CAN VARY FROM THOSE SHOWN. DIMENSIONS CAN ALSO VARY WITH OPTIONAL EQUIPMENT ORDERED.

	APPROVER'S SEAL	MODIFICATIONS	MODEL: Q16-0040-2060 SYMPHONY	SHEET:
			TITLE: PILING PLAN	XP-101
			DRAWN BY: CJM DATE: 07/07/16	
PROPRIETARY AND CONFIDENTIAL THESE DRAWINGS AND SPECIFICATIONS ARE ORIGINAL, PROPRIETARY AND CONFIDENTIAL MATERIALS OF CHAMPION. COPYRIGHT © 1976-2012 BY CHAMPION			SCALE: 1/8" = 1'-0"	