

WHY DO WE NEED A GUIDE?

Drug and needle debris is a challenging issue for Grande Prairie, and our community is not alone. Cities everywhere are working to ensure their citizens are safe and healthy.

Needles are used by people with certain health conditions and/or substance use disorder. The majority of needles in our community are disposed of safely, but there is still work to be done. People who use needles and the community have a shared responsibility for safe disposal.

WHAT ARE THE RISKS OF TOUCHING A DISCARDED NEEDLE?

Needles are not like regular garbage or litter, and require special care. Following the precautions and advice within this guide can eliminate the risk in touching or being poked by a needle.

The majority of people will not get sick if accidentally poked by a needle but there is still a possibility. Even if you can't see it, discarded needles may contain some of the blood or fluids from the person who used the needle. When viruses in blood are exposed to the open air most die within minutes to hours. However, there is no way to know how long a needle has been lying where you found it, so it is best to be safe. Call for assistance or use a needle disposal kit.

For more information on communicable diseases, visit: myhealth.alberta.ca



GRANDE PRAIRIE NEEDLE DISPOSAL GUIDE

Revised March 2026

If you are poked by a needle call Health Link at 8-1-1



780-830-7094

mobileoutreach@gppolice.com

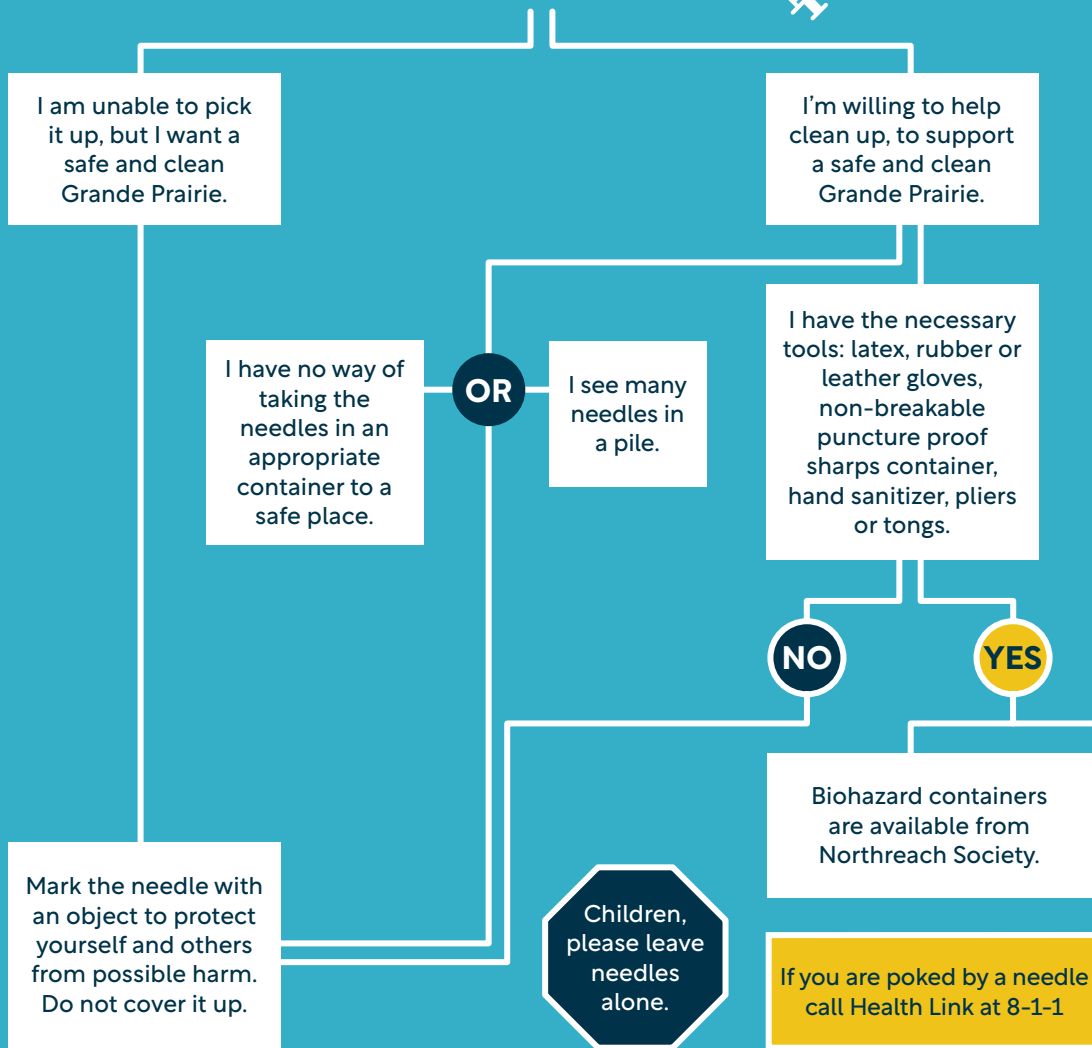
everyoneisimpacted.com

Everyone is Impacted
GRANDE PRAIRIE OPIOID CRISIS

**MOBILE
OUTREACH**

CITY OF
GRANDE
prairie

I FOUND A NEEDLE



FOR NEEDLE PICKUP

CALL 3-1-1

Mobile Outreach
780-830-7094 for needle disposal
Monday to Friday: 7 a.m. to 7 p.m. (excluding statutory holidays)

Northreach Society Needle Hotline
780-876-4277 call or text to report needle debris. Leave a detailed message with street address, location, and phone number. Photos can be sent by text.
Hotline Hours: Monday to Friday 8:30 a.m. – 4:30 p.m.

HOW TO DISPOSE OF A NEEDLE SAFELY

- 1 TREAT ANY NEEDLE YOU FIND AS CONTAMINATED.**
Put on latex, rubber or leather gloves to protect your hands from contamination. Use tong or pliers to carefully pick up the needle with the tip pointed away from your body.
- 2 PLACE THE SHARPS CONTAINER ON A STABLE SURFACE.**
Do not hold the container while putting the needle inside. Place the needle point down into the container and close lid. Use a non-breakable, puncture-proof container such as a thick plastic bottle or sharps container.
- 3 FIND THE NEAREST NEEDLE DISPOSAL LOCATION**

Northreach:
780-538-3388 (Aberdeen Centre, Suite 100 9728 101 Ave.)
Mon to Thur: 8:30 a.m. – 7 p.m., Friday 8:30 a.m. – 4:30 p.m.

Pharmacies:
Needles must be in a biohazard container.

Supervised Consumption Site:
Needles can be dropped off at the site near Wapiti House, 10101 97A St., 7 days a week from 10 a.m. – 10 p.m.

Yellow Bin Needle Drop Locations:

 - Between McLaurin Baptist Church and Plus I Bottle Depot
 - Centre 2000 (Sani dump)
 - Community Village (Beside garage)
 - Grande Prairie Museum (Park in front)
 - Muskoseepi Park (Parking Lot)
 - Northern Addiction Centre (Treatment & Detox Entrances)
 - Northreach Society
 - Salvation Army
 - Saint Lawrence Centre
 - Smith Soccer Field
 - Towne Centre Mall (South parking lot)
 - Wapiti House (East side by picnic tables)
- 4 WASH YOUR HANDS AND / OR USE HAND SANITIZER. DISINFECT ALL REUSABLE TOOLS WITH BLEACH.**
If you find other debris, pick it up with tongs and place it in a sharps container for safe disposal.