

# Summary Development Statistics December 2012

## Approved Permits

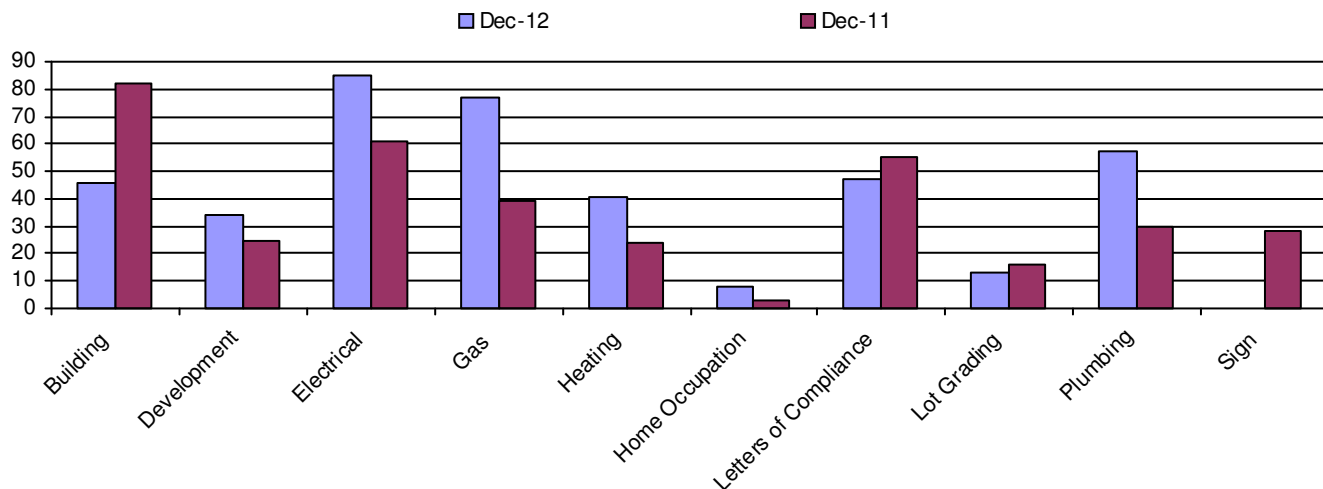
Permit Type	Number of Permits/Applications				
	Dec 2012	Dec 2011	2012 to Dec	2011 to Dec	YTD % Change
Subdivision	0	0	0	4	-100%
Sign	0	28	273	292	-7%
Plumbing	57	30	764	445	72%
Lot Grading	13	16	639	364	76%
Letters of Compliance	47	55	1131	875	29%
Land Use Amendments	0	0	13	0	0%
Home Occupation	8	3	113	120	-6%
Heating	41	24	651	349	87%
Gas	77	39	873	510	71%
Electrical	85	61	1276	873	46%
Development	34	25	1153	827	39%
Building	46	82	1405	1057	33%
<b>Total</b>	408	363	8291	5716	45%

## Building Permit Breakdown

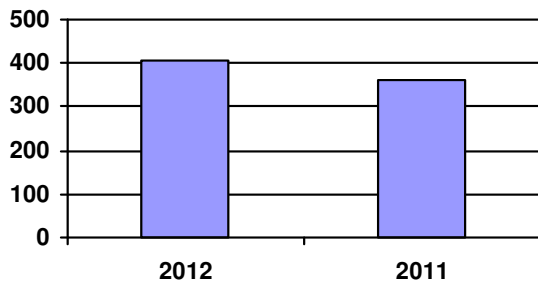
Building Type	Number of Permits (and Units)				Construction Value			
	Dec 2012	Dec 2011	2012 to Dec	2011 to Dec	Dec 2012	Dec 2011	2012 to Dec	2011 to Dec
Residential Alteration	18	26	245	226	\$347,000	\$235,000	\$3,059,072	\$3,043,040
Commerical Building	0	8	19	27	\$0	\$4,525,251	\$26,992,140	\$32,517,584
Demolition	2	1	19	12	\$0	\$10,000	\$163,000	\$495,000
Duplex	0	0	14 (28)	3 (4)	\$0	\$0	\$2,587,136	\$486,525
Four Plex	0	0	5 (20)	0	\$0	\$0	\$1,900,543	\$0
Industrial Alteration	0	0	16	4	\$0	\$0	\$4,034,088	\$650,774
Industrial Building	1	3	10	13	\$315,000	\$830,424	\$4,578,447	\$58,229,391
Institutional Alteration	0	3	19	11	\$0	\$1,355,000	\$2,635,300	\$6,006,205
Institutional Building	2	0	6	1	\$43,809,870	\$0	\$59,321,645	\$260,487
Commercial Alteration	1	10	92	95	\$52,665	\$1,450,200	\$22,050,677	\$21,246,307
Multiple Family Dwelling	0	0	0	0	\$0	\$0	\$0	\$0
Triplex	0	0	0	0	\$0	\$0	\$0	\$0
Residential Deck	3	12	253	249	\$6,000	\$27,000	\$557,000	\$488,000
Residential Garage	1	0	48	23	\$10,000	\$0	\$397,000	\$180,000
Rowhousing	5 (25)	0	5 (25)	0	\$2,995,500	\$0	\$2,995,500	\$0
Semi Detached	4	0	86 (92)	12	\$912,165	\$0	\$15,883,578	\$2,519,479
Shed	0	3	31	37	\$0	\$16,000	\$154,000	\$141,000
Single Family	4	5	126 (129)	58	\$907,165	\$897,165	\$27,529,737	\$10,430,896
Single Family -Garage	3	8	382	273	\$558,500	\$2,166,657	\$81,083,982	\$59,893,256
Townhouse	0	0	0	0	\$0	\$0	\$0	\$0
Manufactured Home	2	3	29	11	\$10,000	\$15,000	\$145,000	\$55,000
<b>Total</b>	46	82	1405	1055	\$49,923,865	\$11,527,697	\$256,067,845	\$196,642,944

# Summary Development Statistics December 2012

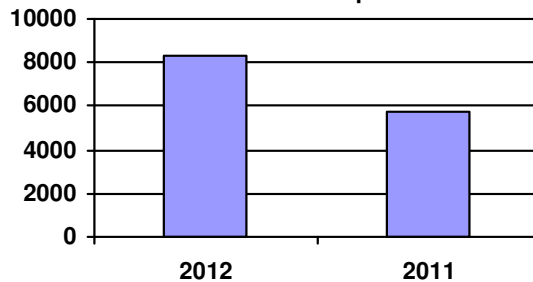
Monthly Permit Totals- 2-Year Comparison



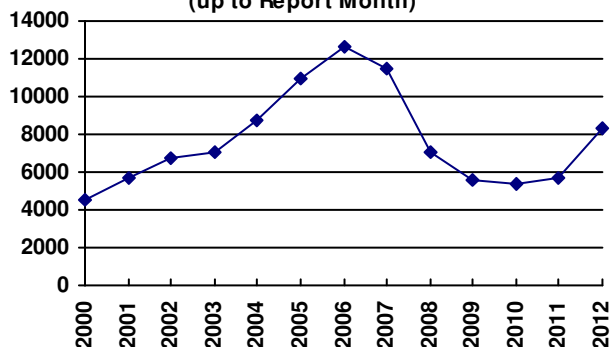
Total Permits For Month



Total Permits For Year up to Month



Annual Number of Permits  
(up to Report Month)



Annual Building Construction Value  
(up to Report Month)

