

Summary Development Statistics December 2007

Approved Permits

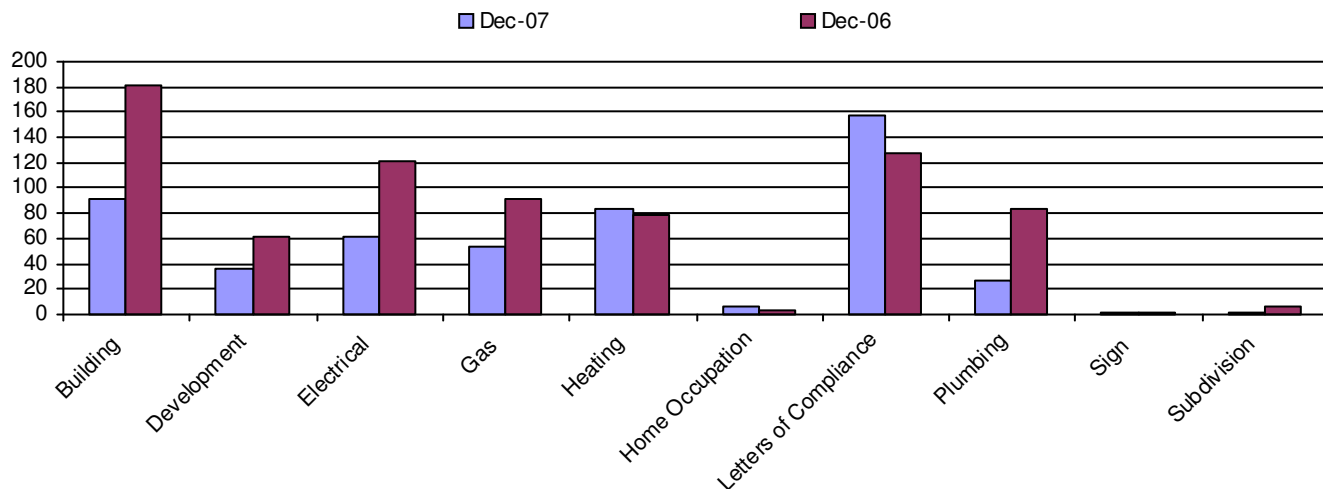
| Permit Type | Number of Permits/Applications | | | | |
|-----------------------|--------------------------------|----------|-------------|-------------|--------------|
| | Dec 2007 | Dec 2006 | 2007 to Dec | 2006 to Dec | YTD % Change |
| Building | 91 | 181 | 1806 | 2320 | -22% |
| Development | 36 | 62 | 1354 | 1882 | -28% |
| Electrical | 62 | 122 | 1933 | 1805 | 7% |
| Gas | 53 | 91 | 1452 | 1481 | -2% |
| Heating | 84 | 79 | 1258 | 1269 | -1% |
| Home Occupation | 6 | 3 | 159 | 147 | 8% |
| Land Use Amendments | 0 | 0 | 11 | 7 | 57% |
| Letters of Compliance | 157 | 128 | 1904 | 2026 | -6% |
| Plumbing | 27 | 84 | 1427 | 1488 | -4% |
| Sign | 2 | 1 | 165 | 122 | 35% |
| Subdivision | 1 | 7 | 57 | 56 | 2% |
| Total | 519 | 758 | 11526 | 12603 | -9% |

Building Permit Breakdown

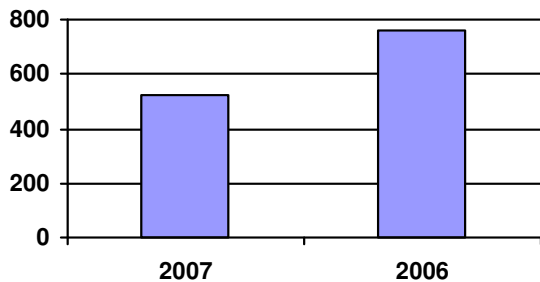
| Building Type | Number of Permits (and Units) | | | | Construction Value | | | |
|--------------------------|-------------------------------|----------|-------------|-------------|--------------------|--------------|---------------|---------------|
| | Dec 2007 | Dec 2006 | 2007 to Dec | 2006 to Dec | Dec 2007 | Dec 2006 | 2007 to Dec | 2006 to Dec |
| Residential Alteration | 21 | 26 | 335 | 307 | \$86,000 | \$208,320 | \$3,139,915 | \$3,437,085 |
| Duplex | 0 | 0 | 16 (32) | 2 (4) | \$0 | \$0 | \$2,142,050 | \$134,250 |
| Four Plex | 0 | 0 | 3 (12) | 8 (32) | \$0 | \$0 | \$822,100 | \$2,152,011 |
| Commercial Alteration | 22 | 7 | 100 | 99 | \$2,218,335 | \$1,608,378 | \$18,860,603 | \$20,369,811 |
| Commerical Building | 16 | 1 | 53 | 29 (108) | \$24,700,961 | \$1,300,000 | \$81,700,621 | \$41,097,221 |
| Industrial Alteration | 1 | 0 | 2 | 3 | \$10,000 | \$0 | \$2,782,385 | \$227,000 |
| Industrial Building | 3 | 0 | 6 | 0 | \$1,039,118 | \$0 | \$3,349,723 | \$0 |
| Institutional Alteration | 3 | 1 | 4 | 14 (26) | \$9,142,565 | \$163,562 | \$9,182,565 | \$3,051,565 |
| Institutional Building | 1 | 10 | 3 | 18 (55) | \$19,966,462 | \$70,496 | \$54,845,762 | \$5,599,324 |
| Demolition | 2 | 5 | 27 | 24 | \$1,000 | \$0 | \$46,000 | \$10,000 |
| Multiple Family Dwelling | 0 | 0 | 14 (239) | 21 (342) | \$0 | \$0 | \$34,827,660 | \$33,503,086 |
| Triplex | 0 | 0 | 1 (3) | 3 (9) | \$0 | \$0 | \$315,000 | \$460,890 |
| Residential Deck | 10 | 23 | 358 | 370 | \$14,000 | \$27,000 | \$472,000 | \$470,426 |
| Residential Garage | 1 | 3 | 64 | 54 | \$5,000 | \$10,000 | \$416,880 | \$499,265 |
| Rowhousing | 0 | 0 | 34 (61) | 0 | \$0 | \$0 | \$7,453,984 | \$0 |
| Semi Detached | 0 | 4 | 112 (114) | 167 | \$0 | \$371,700 | \$13,052,003 | \$13,537,836 |
| Shed | 1 | 1 | 45 | 39 | \$1,000 | \$5,000 | \$130,000 | \$146,600 |
| Single Family | 1 | 10 | 177 | 324 (325) | \$79,215 | \$775,965 | \$20,409,844 | \$25,185,288 |
| Single Family -Garage | 6 | 74 | 360 | 733 | \$1,457,962 | \$8,617,484 | \$53,871,343 | \$79,843,066 |
| Townhouse | 0 | 0 | 0 | 0 | \$0 | \$0 | \$0 | \$0 |
| Manufactured Home | 3 | 16 | 92 | 105 | \$15,000 | \$80,000 | \$682,500 | \$557,720 |
| Total | 91 | 181 | 1806 | 2320 | \$58,736,618 | \$13,237,905 | \$308,502,938 | \$230,282,444 |

Summary Development Statistics December 2007

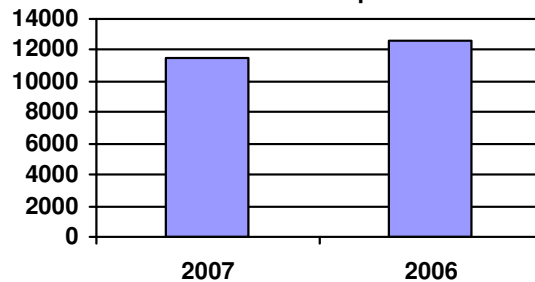
Monthly Permit Totals- 2-Year Comparison



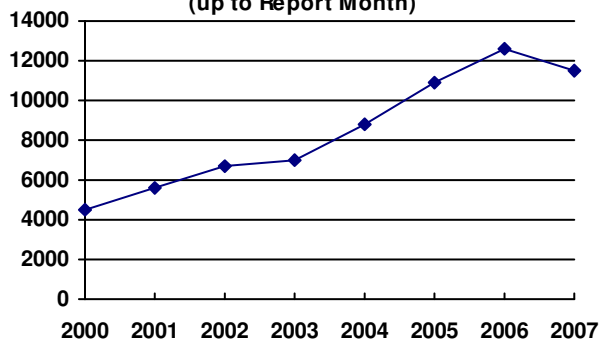
Total Permits For Month



Total Permits For Year up to Month



Annual Number of Permits (up to Report Month)



Annual Building Construction Value (up to Report Month)

