

CITY OF GRANDE PRAIRIE

BYLAW C-1326

A Bylaw to Close Government Road Allowance

WHEREAS, the Municipal Council of the City of Grande Prairie, in the Province of Alberta, has given notice in the manner and form prescribed by Section 22 of the Municipal Government Act, Chapter M-26, RSA 2000, of its intention to pass a bylaw for the purpose of closing road described as:

All that portion of road plan 952-3580 (0.293hectares) and all that portion of road plan 782-2397(0.076 hectares) that lie within the limits of Lot ____ Block____ Plan ____

EXCEPTING THEREOUT ALL MINES AND MINERALS.

WHEREAS the said Council held a Public Meeting on September 21, 2015, at which any person who claimed his property would be affected prejudicially by the said road closure was given an opportunity to be heard by City Council.

NOW THEREFORE, THE MUNICIPAL COUNCIL OF THE CITY OF GRANDE PRAIRIE, IN THE PROVINCE OF ALBERTA, DULY ASSEMBLED, ENACTS AS FOLLOWS:

1. All that portion of Road Plan 952-3580 and Road Plan 782-2397 as described in Schedule “A”, excepting thereout all mines and minerals, is hereby closed.
2. This bylaw shall take effect on the date it is passed.

READ a first time this 10th day of August , 2015.

“B. Given” (signed)
Mayor

“K. Anderson” (signed)
Corporate Services Director

READ a second time this 21th day of September , 2015.

READ a third time and finally passed this 21th day of September , 2015.

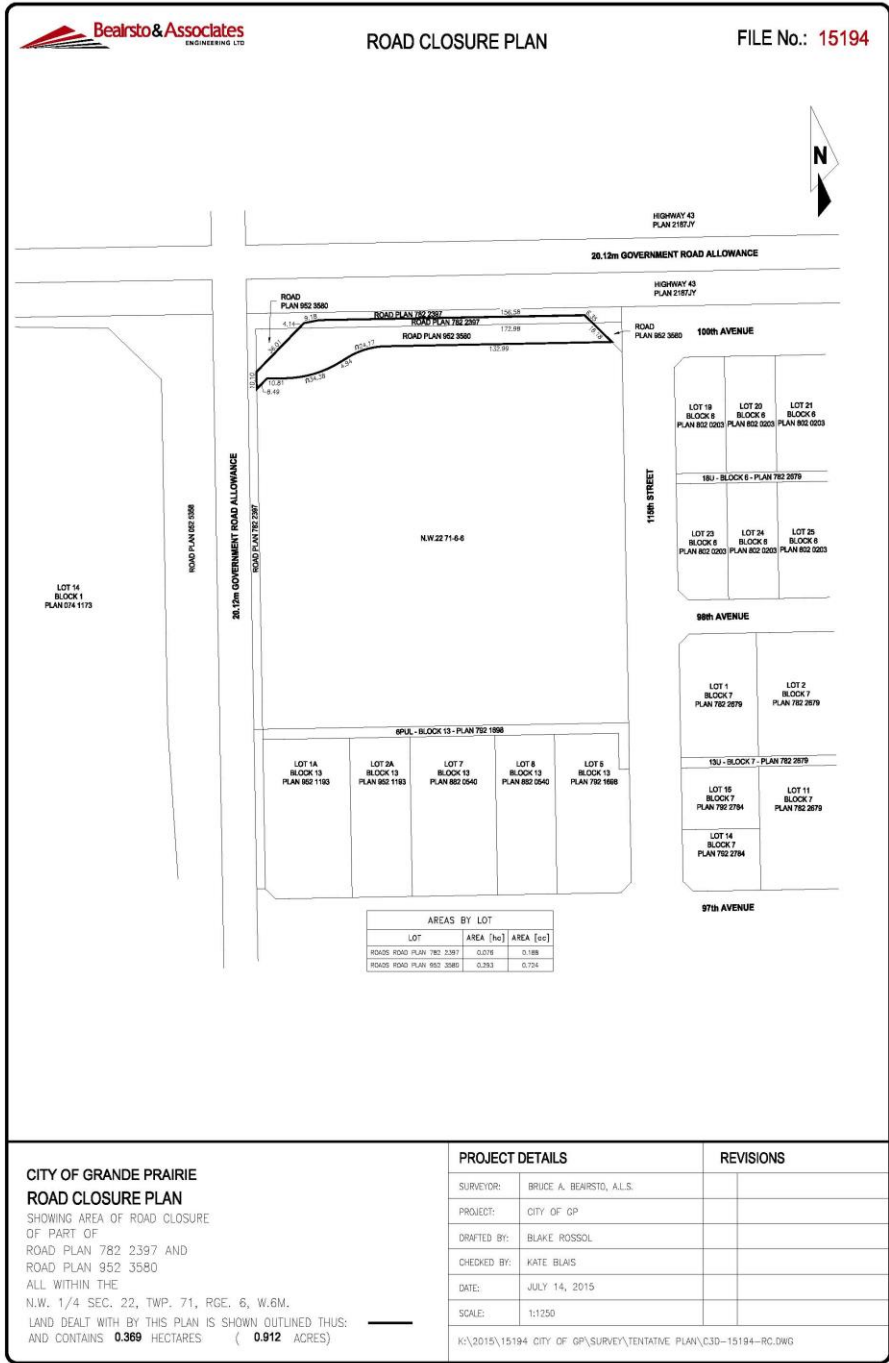
“B. Given” (signed)
Mayor

“K. Anderson” (signed)
Corporate Services Director

CITY OF GRANDE PRAIRIE

BYLAW C-1326

SCHEDULE "A"



AREAS BY LOT		
LOT	AREA [ha]	AREA [ac]
ROADS ROAD PLAN 782 2397	0.076	0.188
ROADS ROAD PLAN 952 3580	0.293	0.724

CITY OF GRANDE PRAIRIE
ROAD CLOSURE PLAN
 SHOWING AREA OF ROAD CLOSURE
 OF PART OF
 ROAD PLAN 782 2397 AND
 ROAD PLAN 952 3580
 ALL WITHIN THE
 N.W. 1/4 SEC. 22, TWP. 71, RGE. 6, W.6M.
 LAND DEALT WITH BY THIS PLAN IS SHOWN OUTLINED THUS:
 AND CONTAINS **0.369** HECTARES (**0.912** ACRES)

PROJECT DETAILS		REVISIONS
SURVEYOR:	BRUCE A. BEARSTO, A.L.S.	
PROJECT:	CITY OF GP	
DRAFTED BY:	BLAKE ROSSOL	
CHECKED BY:	KATE BLAIS	
DATE:	JULY 14, 2015	
SCALE:	1:1250	
K:\2015\15194 CITY OF GP\SURVEY\TENTATIVE PLAN\C3D-15194-RC.DWG		