

CITY OF GRANDE PRAIRIE

OFFICE CONSOLIDATION

BYLAW C-1214

A Bylaw to Close a Portion of 88 Street

(As amended by Bylaw C-1214A)

THE MUNICIPAL COUNCIL OF THE CITY OF GRANDE PRAIRIE, IN THE PROVINCE OF ALBERTA, DULY ASSEMBLED, ENACTS AS FOLLOWS:

1. PLAN 7431AU
All that portion of the road
That lies North of the production easterly
Of the South limit of Lot 192, Block 5, Plan 9822515
And South of the line drawn parallel to the said easterly production
From the most southerly North East corner of Lot 84, Block 6, Plan 0521784
Excepting thereout all mines and minerals.
2. PLAN 9821584
The corner cut-off lying South East of the South East limit of Lot 192, Block 6, Plan 9822515
And North of the production easterly of the South limit of the said lot.
Excepting thereout all mines and minerals.

(Bylaw C-1214A - October 5, 2009)

WHEREAS the said Council held a Public Meeting on July 16, 2007, at which any person who claimed his property would be affected prejudicially by the said road closure was given an opportunity to be heard by City Council.

NOW THEREFORE, THE MUNICIPAL COUNCIL OF THE CITY OF GRANDE PRAIRIE, IN THE PROVINCE OF ALBERTA, DULY ASSEMBLED, ENACTS AS FOLLOWS:

1. All that portion of 88 Street as described in Schedule "A", excepting thereout all mines and minerals, is hereby closed.
2. Bylaw C-1190 is hereby repealed.
3. This bylaw shall take effect on the date it is passed.

READ a first time this 8th day of September, 2008.

"D. Logan" (signed)
MAYOR
"J. Ferguson" (signed)
CITY CLERK

READ a second time this 6th day of October, 2008.

READ a third time and finally passed this 6th day of October, 2008.

"D. Logan" (signed)
MAYOR
"J. Ferguson" (signed)
CITY CLERK

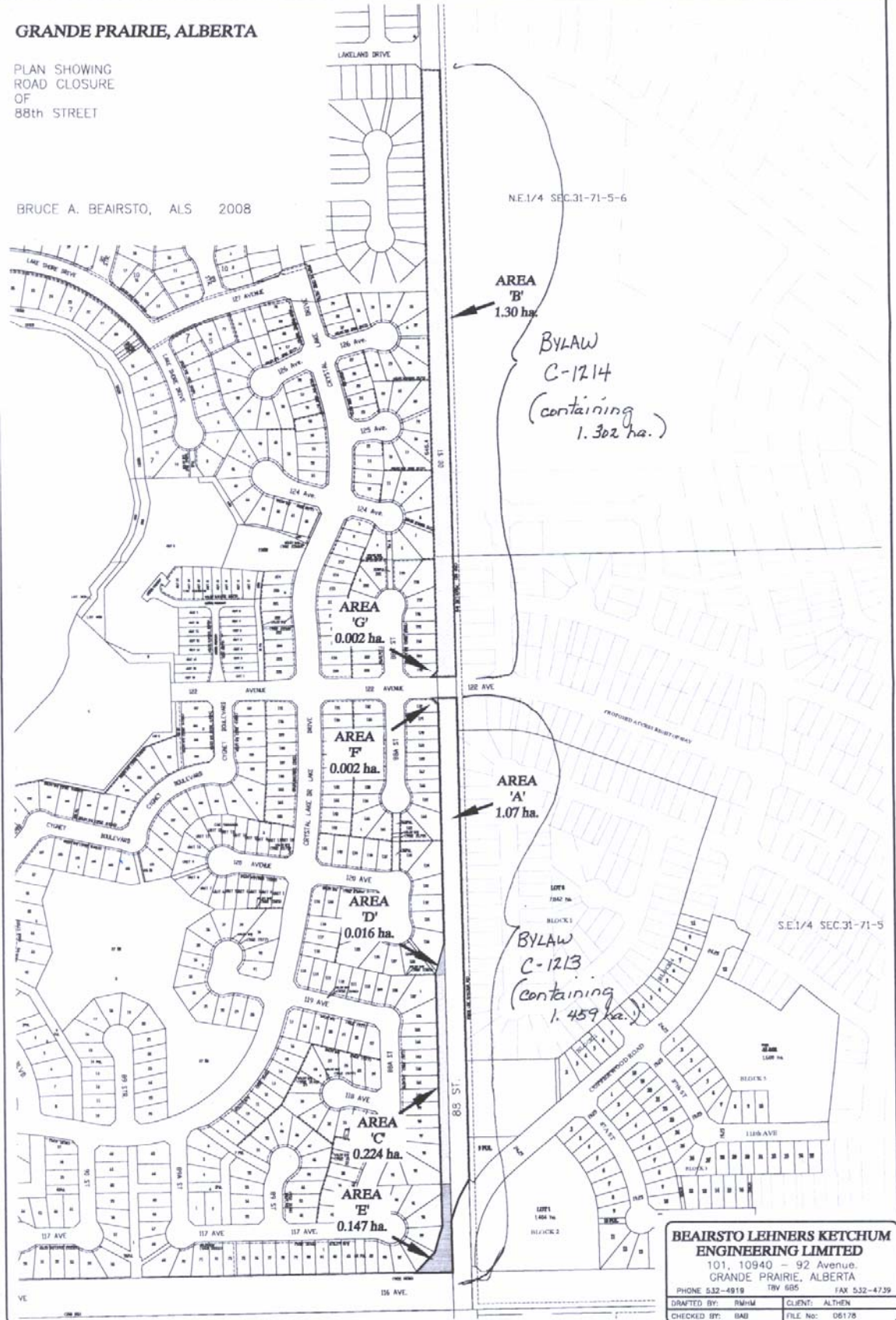
Bylaw C-1214

Schedule "A"

GRANDE PRAIRIE, ALBERTA

PLAN SHOWING
ROAD CLOSURE
OF
88th STREET

BRUCE A. BEAIRSTO, ALS 2008



**BEAIRSTO LEHNERS KETCHUM
ENGINEERING LIMITED**
101, 10940 - 92 Avenue,
GRANDE PRAIRIE, ALBERTA
PHONE 532-4919 TFW 695 FAX 532-4739
DRAFTED BY: PMHM CLIENT: ALTMEN
CHECKED BY: BAO FILE No: 06178